

Reduce, Reuse, Compost, and Recycle in Western Mass



Amy Donovan

Program Director, Franklin County Solid Waste District

AMC Western Mass Chapter



Ice Cream Cartons Are NOT RECYCLABLE



By Amy Donovan
RECYCLING MAVEN

Hi Amy, can we recycle ice cream cartons along with milk cartons?

— Resident of
Charlemont MA

milk, juice, soup, and almond milk. Ice cream cartons are not recyclable, but beverage cartons are designed for recycling.

Ice cream cartons and frozen food boxes are **sprayed** with polyethylene plastic to create a protective coating on/in the container. This plastic layer keeps the package from falling apart when wet, and also prevents the paper fiber from breaking down in the recycling process. The plastic coating cannot be separated from the paper fiber, so “paper” ice cream cartons are not accepted in any recycling programs. Ice cream cartons and other frozen food containers should go in the trash.

In contrast, “gableton” milk and



RecycleSmartMA website
<https://recyclesmartma.org>
Recyclopedia

**NO FOOD OR LIQUID
IN RECYCLING**

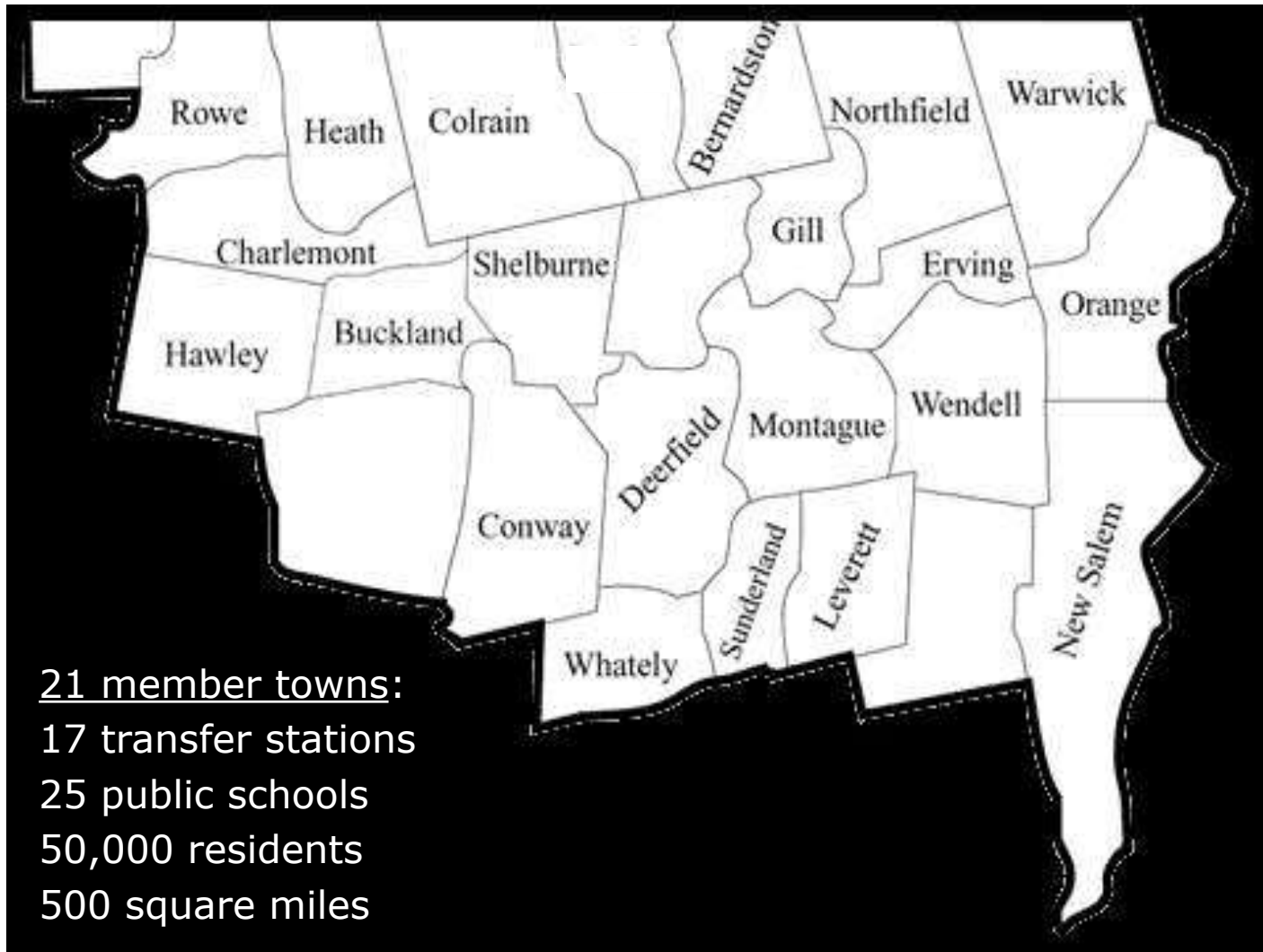
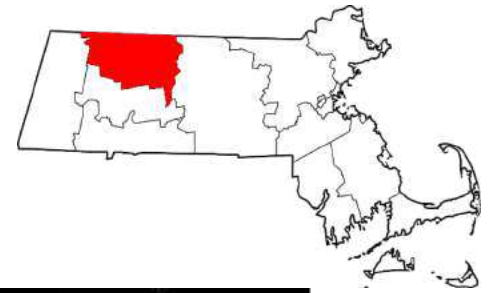


EMPTY ALL CONTAINERS

Food and liquid can ruin other recyclables.



Franklin County Solid Waste Management District



21 member towns:
17 transfer stations
25 public schools
50,000 residents
500 square miles

RECYCLE in WESTERN MASS



More about recycling in a moment...



Where is “Away?”

Trash goes to landfills



- Does NOT become soil
- Expensive: \$94/ton
- 2 WM incinerators closed '22
- No landfills in western MA
- 5 years left in MA landfills
- Contributes to climate change

< “Chicopee Landfill Closes”
MassLive photo

Trash from western Mass
is sent by train to landfills
in faraway states:

South Carolina
Pennsylvania
New York State



Greenhouse gases from trash ballooning with fewer disposal options

By CHRIS LARABEE
Staff Writer

When it comes to producers of greenhouse gas emissions, the usual suspects are the airplanes flying over our heads or fossil fuels being burned to generate electricity, but the waste we generate every day contributes a significant amount of methane to the atmosphere.

Municipal waste in landfills, more specifically organic waste like food and paper products, is responsible for twice as many greenhouse gas emissions as commercial flights, according to the Environmental Protection Agency. In the Pioneer Valley, municipal waste's climate impact is now two-fold, due to the closure of a waste incinerator on the Agawam-Springfield line, which has forced much of the region's trash to be brought down the East Coast.

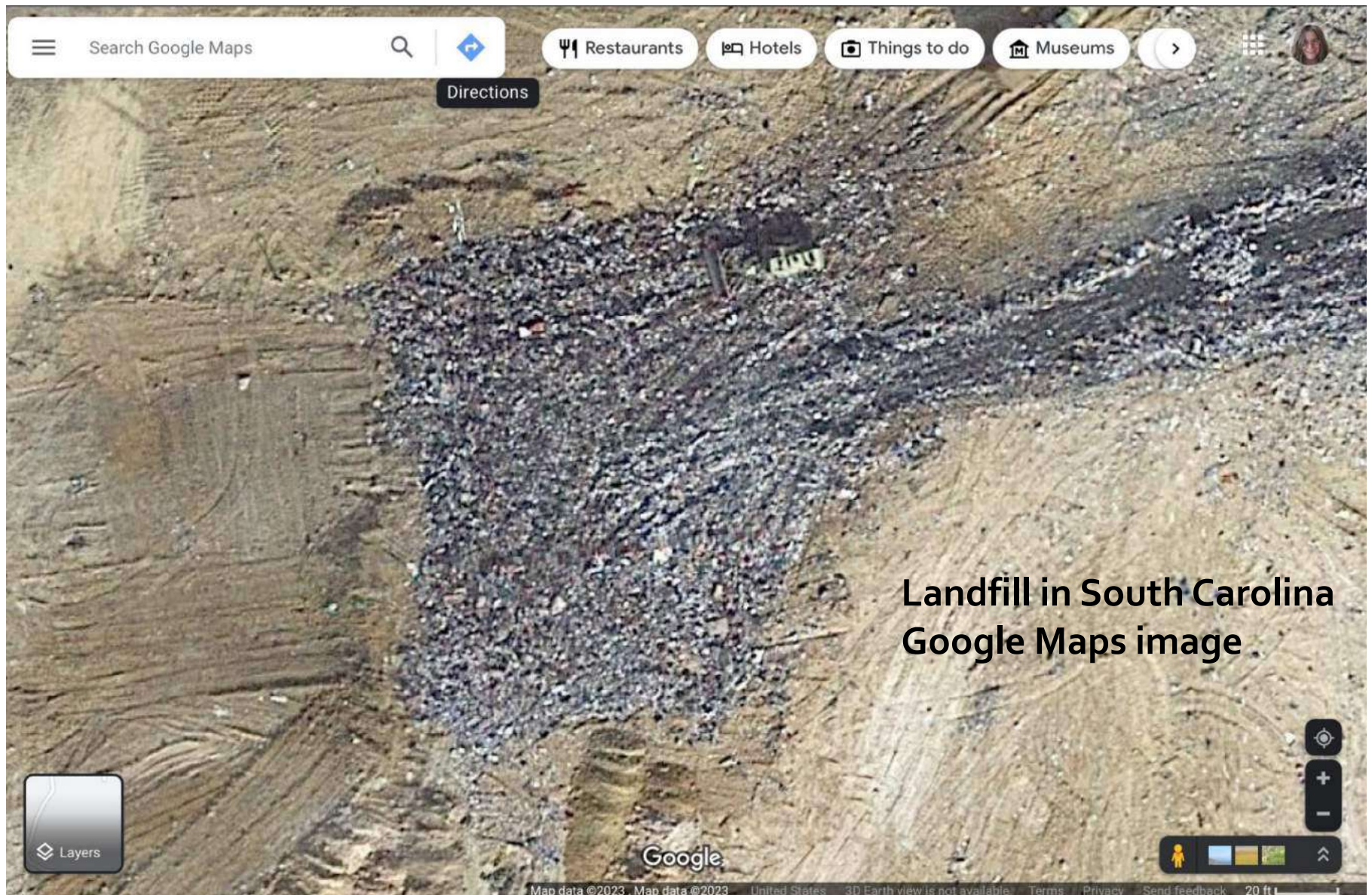
"I'm not saying that was a perfect solution for waste, but it was local, it was right down in Springfield," said Amy Donovan, the Franklin County Solid Waste Management District's program director. "Since we don't have landfills around here and we don't have combustors, we are send-



SEE TRASH A6

A Republic Services truck stops on Fourth Street in Turners Falls on Thursday.

STAFF PHOTO/JULIAN MENDOZA



**Landfill in South Carolina
Google Maps image**

These items should not be put in trash (some are hazardous waste):

- Household hazardous waste

- Tires



- Oil paint



- Fluorescent light bulbs



- Cell phones and their batteries, rechargeable batteries

- Mercury thermometers
& thermostats



Recycling goes to **Springfield Materials Recycling Facility (MRF)**

- Reduce, Reuse, Recycle Guide: Earth Day (April 22)
- tinyurl.com/RRRN-2023
- springfieldmrf.org / 5 new videos
- Limited tours of facility available



Communities Delivering to Springfield MRF

July 2020



RECYCLE in WESTERN MASS



RECYCLE in WESTERN MASS



More about recycling in a moment...

Recycling also goes to other MA and CT MRFs
RecycleSmartMA website: "Where does it go?"
<https://recyclesmartma.org/where-does-it-go/>

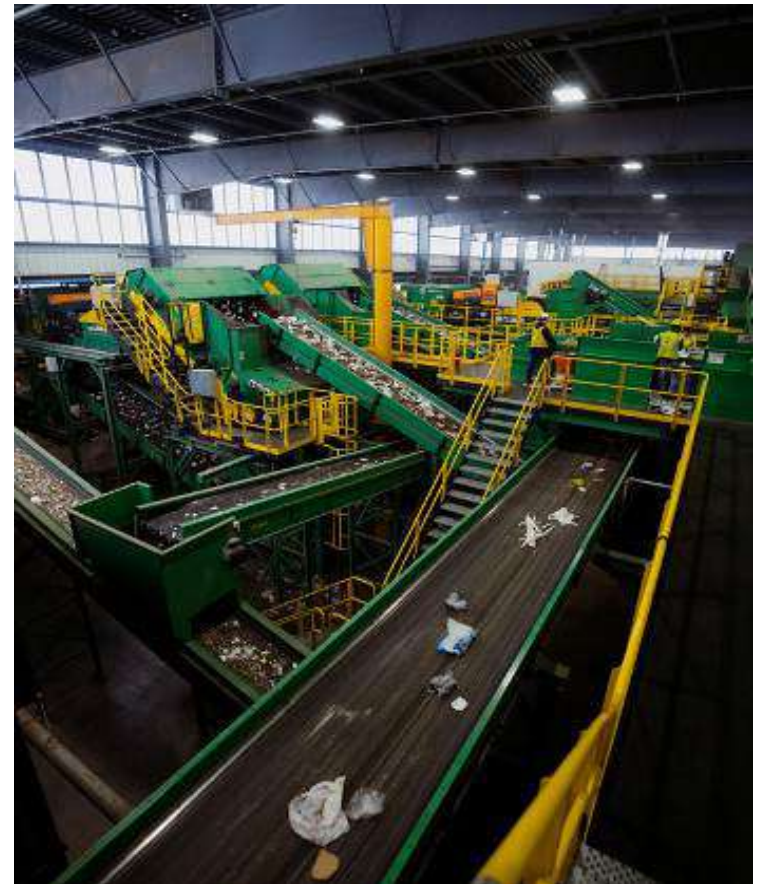
EXPLORE OUR RECYCLING ROAD MAP



USA Recycling's new MRF in Berlin CT



- \$30 million MRF built in last 2 years
- "All American MRF" (aka Murphy Rd Recycling") processes up to 60 tons per hour, more than 1,000 tons per day and about 200,000 tons per year
- Very high tech: 11 optical sorters
- Tours available!



Bad press / Misinterpretation of recycling data

Myth:

- Everything was sent to China before the National Sword ban in 2018
- Our recyclables are thrown away

Rebuttals/links:

- 2021 RRR guide: tinyurl.com/RRRN-2021 (domestic)
- Mass waste bans: www.mass.gov/guides/massdep-waste-disposal-bans
- SMRF only throws away 5% incoming

Bad press / Misinterpretation of recycling data

Misinterpretation:

"9% of plastic is recycled"

- EPA Data: Based on ALL plastic made for a given year: medical, vehicle, trash bags, home furnishings, appliances...
- NOT based on what you put in your bin

Links/rebuttal:

- www.epa.gov/facts-and-figures-about-materials-waste-and-recycling/plastics-material-specific-data
- 75 to 90% of what is collected gets recycled
- Recycling economy/commodity: it's a business loss to pay to throw it away

Bad press / Misinterpretation of recycling data

Misinterpretation:

"5% of plastic is recycled"

Greenpeace/NPR report

- EPA Data: Based on ALL plastic manufactured for a given year: medical, vehicle, trash bags, home furnishings, appliances...

Rebuttals/links:

- <https://www.recorder.com/eline-macdougall-nov-8-48718078>
- <https://ssrcoop.info/2022/11/04/dont-believe-everything-you-read-plastic-containers-in-recycling-are-valuable-and-arent-getting-trashed/>
- <https://nwraproduction.wpen.ginepowered.com/wp-content/uploads/2022/10/NPR-Story-Greenpeace-Plastic-Recycling-Report.pdf>

“Compost” (food and paper waste) goes to a LOCAL commercial compost facility (such as Martin’s Farm in Greenfield or Clear View Composting in Orange)



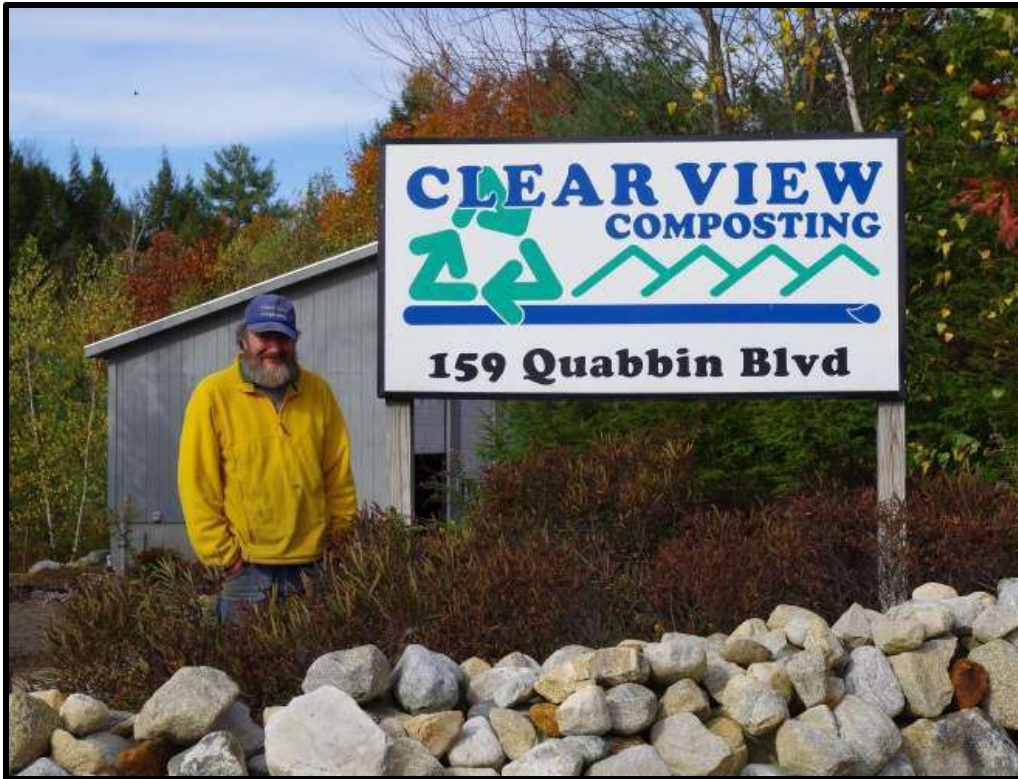
Windrow turner at Martin’s Farm

Compost thermometer in windrow shows 140°

▶ United States • MA • Franklin Co. • Greenfield

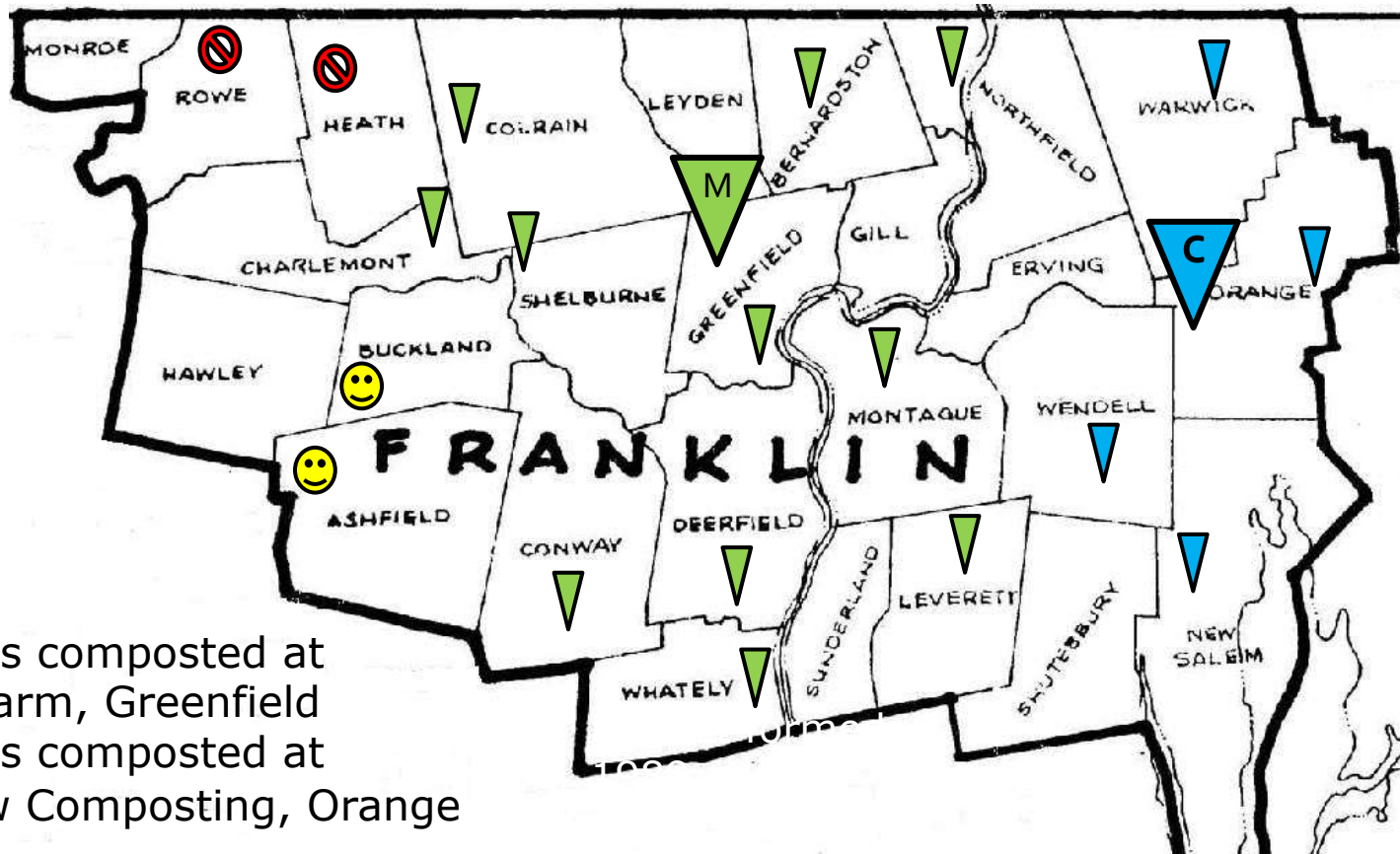
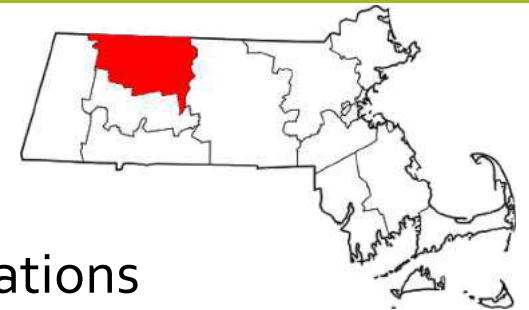
Windrows at Martin's Farm
Greenfield, MA

Clear View Composting, Orange MA



Franklin County, MA

Municipal Compost Programs at 15 of 19 Transfer Stations



Key:

- ▼ Materials composted at Martin's Farm, Greenfield
- ▼ Materials composted at Clear View Composting, Orange

- 😊 Potential new programs
- ⊘ No hauler available

Composting and Recycling:

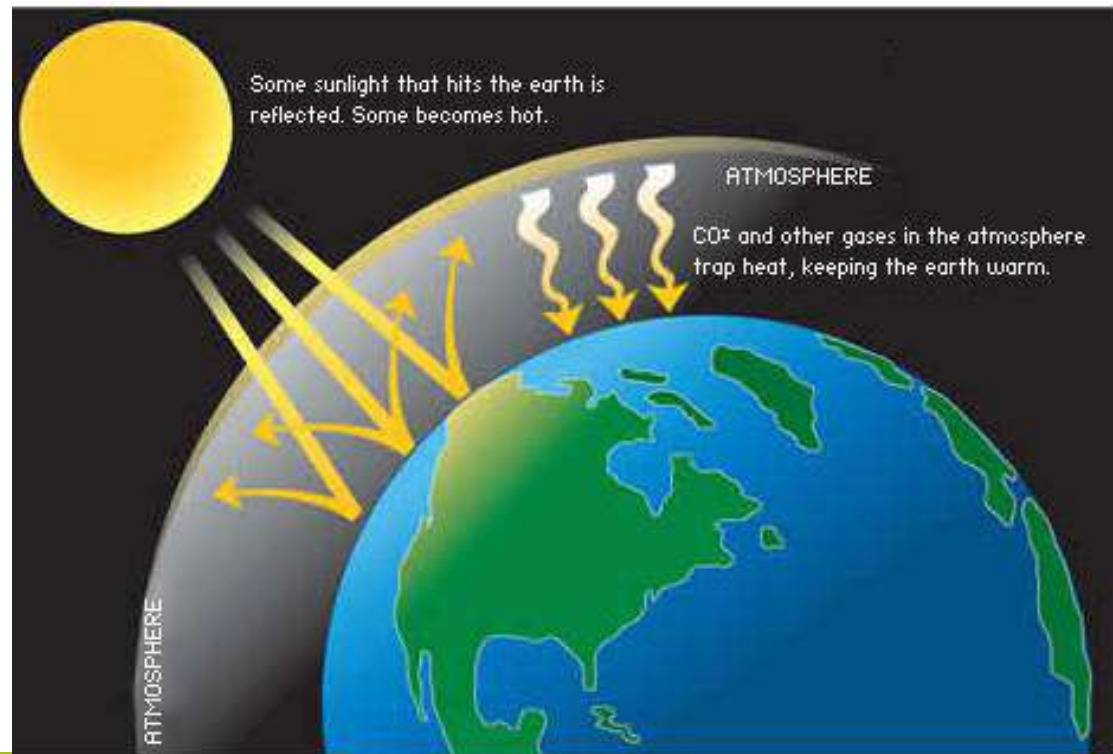
- Save money
- Save energy
- Save water
- Save natural resources
- Slow climate change!



Composting and recycling help slow **Climate Change**

Climate Change is caused by greenhouse gases in earth's atmosphere.

The Greenhouse Effect



Greenhouse Gases:

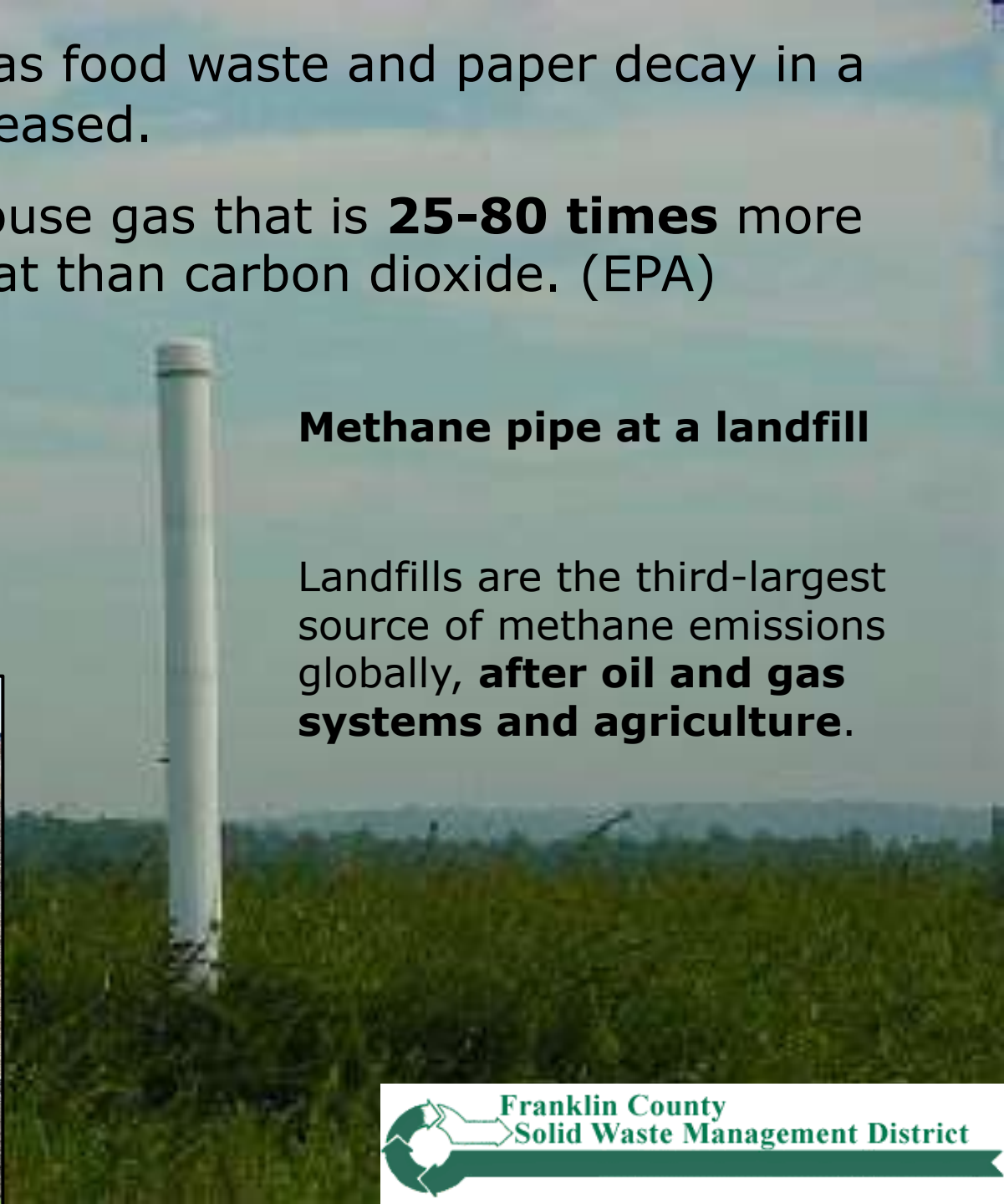
- Carbon Dioxide
- **Methane** (food waste in landfills)
- Nitrous Oxide

When “organics” such as food waste and paper decay in a landfill, **methane** is released.

Methane is a greenhouse gas that is **25-80 times** more effective at trapping heat than carbon dioxide. (EPA)

Methane pipe at a landfill

Landfills are the third-largest source of methane emissions globally, **after oil and gas systems and agriculture.**



Why doesn't *composting* release methane? Because oxygen is part of the composting process (aerobic bacteria). There is *no* oxygen in a landfill (anaerobic bacteria).

Windrow turner or front loader tractor turns/stirs windrows to introduce oxygen.



Windrows at Martin's Farm, Greenfield, MA

Martin's Farm in Greenfield receives organics from:

Schools

25+ public and private schools, UMass, colleges

Municipal compost programs

Deerfield, Greenfield, Leverett, Northfield, Montague, more...

Restaurants

Markets

Big Y stores, Foster's, Co-ops

Events

Franklin County Fair, Heath Fair, Green River Festival, 20 more

Franklin County Fair

- VOLUNTEERS needed!
- Students, individuals, families
- Get in free, free T-Shirt
- Weekend after Labor Day



30 compost stations

2 tons of compost

Contact me!

Municipal Compost Programs

15 Franklin County towns:

Bernardston, Charlemont, Colrain, Conway, Deerfield, Greenfield, Leverett, Montague, New Salem, Northfield, Orange, Shelburne, Warwick, Wendell, Whately



Northfield Transfer Station

Photo: Greenfield Recorder



Montague/Turners Falls Transfer Station

(Slide for Deerfield Town Meeting)

FOOD & PAPER WASTE COMPOSTING

FREE*! At Deerfield Transfer Station



Commercial /Municipal Composting reduces household trash!

Accepts ALL types of food (no liquids), plus compostable paper products
(paper towels, paper napkins, more...)

Started May 2, 2019!

New Salem, Orange, Warwick, Wendell Transfer Stations

- Since 2009-2022
- Smaller programs: 2-5 tons/year
- Hauled and composted by Clear View Composting



Rick Innes, Clear View Composting at Orange Transfer Station



recyclingworksma.com/recycler/clear-view-composting/

Montague Transfer Station (Turners Falls)

- Since March 2021
- 4 cubic yard dumpster
- Also has curbside pickup of trash, recyclables
- Drawdown Montague vols. assisted program launch
- *Estimated 83 tons/year*
- *Potential MSW tip fee savings: \$7,802*
- 2020 population: 8,580



Greenfield Transfer Station Compost Program

- Since 2014
- 4 cubic yard dumpster
- Accepts organics, recyclables from non-residents (\$5 host fee)



Home compost bins; keep your food waste at home!



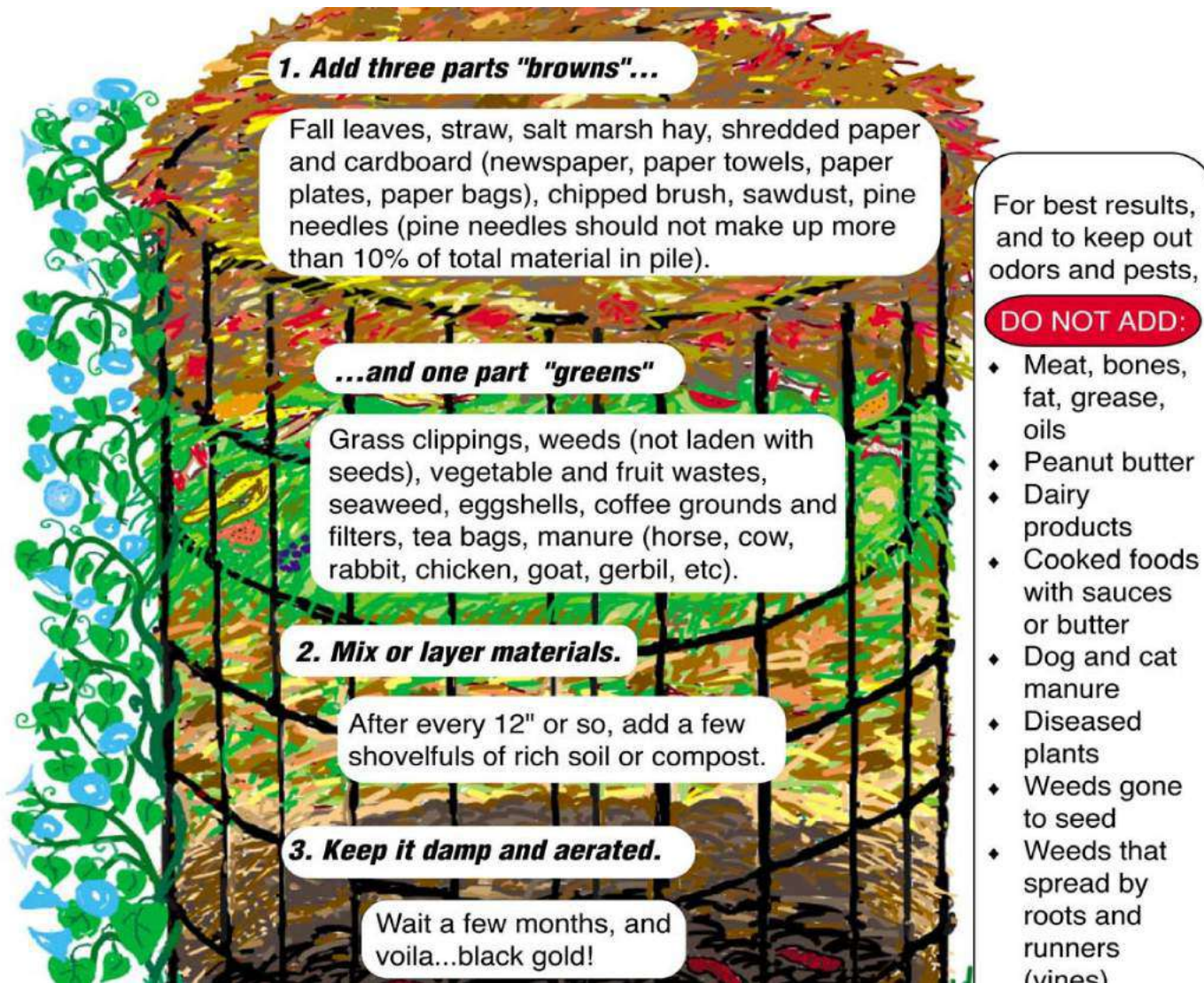
YES: compost fruit, veggies, peels, bread, pasta, coffee grounds, tea, leaves, garden and yard waste

NO: animal products:
meat, bones, cheese!

Save money on trash disposal and garden soil: finished compost is a GREAT soil amendment for gardens, lawns!

177 Mass. municipalities sell low cost compost bins, pails:

- Call town hall, Board of Health, DPW or transfer station
- Go to mass.gov and type "low cost compost bin" into search bar: list



1. Add three parts "browns"...

Fall leaves, straw, salt marsh hay, shredded paper and cardboard (newspaper, paper towels, paper plates, paper bags), chipped brush, sawdust, pine needles (pine needles should not make up more than 10% of total material in pile).

...and one part "greens"

Grass clippings, weeds (not laden with seeds), vegetable and fruit wastes, seaweed, eggshells, coffee grounds and filters, tea bags, manure (horse, cow, rabbit, chicken, goat, gerbil, etc).

2. Mix or layer materials.

After every 12" or so, add a few shovelfuls of rich soil or compost.

3. Keep it damp and aerated.

Wait a few months, and voila...black gold!

For best results, and to keep out odors and pests,

DO NOT ADD:

- ♦ Meat, bones, fat, grease, oils
- ♦ Peanut butter
- ♦ Dairy products
- ♦ Cooked foods with sauces or butter
- ♦ Dog and cat manure
- ♦ Diseased plants
- ♦ Weeds gone to seed
- ♦ Weeds that spread by roots and runners (vines)

What is and is not accepted in recycling programs?



What makes it recyclable?

- Able to be processed
- Technology exists
- Markets exist

RECYCLE PAPER/CARDBOARD

Yes

please recycle
these paper items
and cardboard



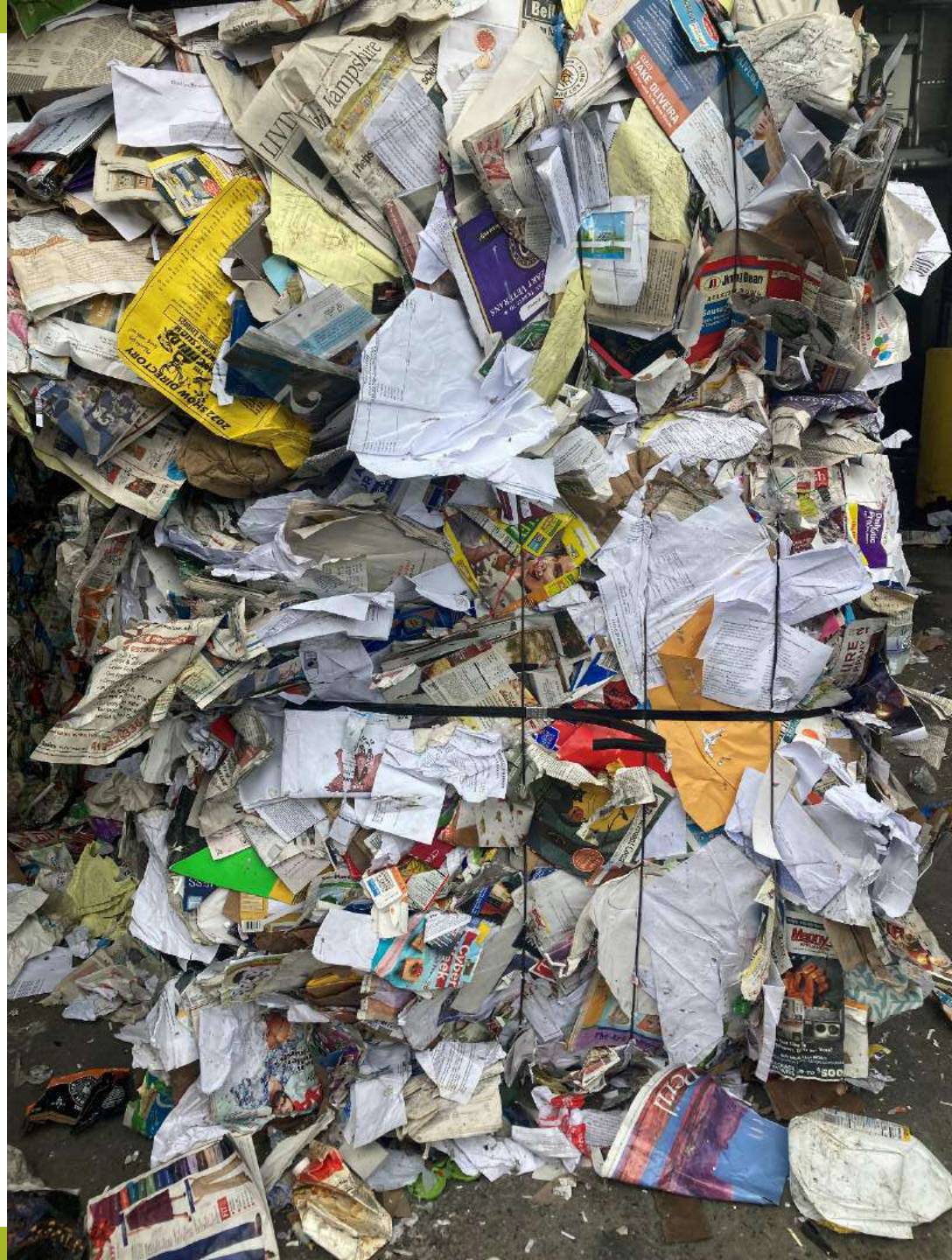
Clean papers, magazines/catalogs, gift wrap/bags/tissue paper and greeting cards (no metallic inks, foil, glitter, batteries), calendars, paperback books (covers ok), cardboard, paperboard, empty pizza boxes* *Paper clips, staples and metal spirals are ok.*

No

Plastic bags, plastic packaging, Styrofoam™, pizza boxes with food or liners, textiles, frozen food packaging, soda and beer packaging, shredded paper*

*Lists are not all-inclusive. Please check www.springfieldmrf.org for more detailed information.

Baled mixed paper
("newsprint") at
Springfield MRF,
11/17/22



Loose cardboard at
Springfield MRF,
11/17/22

Yes, EMPTY pizza
boxes are recyclable
(grease is now OK)



RECYCLE CONTAINERS

Yes,

please recycle
these
containers



Metal cans, foil, plastic bottles/jars/tubs/jugs, clear plastic hinged containers (clamshells), clear plastic egg cartons, clear plastic cups, milk and juice cartons, glass bottles and jars* *Labels and caps on bottles are ok.*

No

Metal objects, aerosol cans, plastic bags, black plastic, color or opaque plastic cups, Styrofoam™, automotive fluid bottles, plastics over 2.5 gallons, batteries*

Empty and clean all containers.
Replace lids and caps.

*Lists are not all-inclusive. Please check www.springfieldmrf.org for more detailed information.

Recycle **plastic**:

Plastic bottles,



jars,



tubs,



and jugs



YES: Clear plastic cups, clamshells, berry boxes, egg cartons



"Caps on!"

Empty or rinse,
put cap back on.

No loose caps or lids.

Food, soap, and beverage containers only!

No thanks*

eye
glasses



plastic cups
(color or
opaque)



black plastic
and trays



plastic
tubes



light
bulbs



flower pots



cds



utensils



Styrofoam™



hangers



metal objects



automotive
fluid bottles



plastic bags



plastic
package
liners



bulky rigid
plastics



STEEL/ TIN
ASERO/ LATA

PET PLASTIC
PET PLASTICO

HDPE COLOR
PEAD COLOR

HDPE COLOR
PEAD COLOR



BLUE BIN
WE RECYCLE

NO PLASTIC BAGS

Baled PET #1 plastic
at Springfield MRF,
11/17/22



HDPE #2 natural plastic at Springfield MRF, 11/17/22



HDPE #2 color plastic
at Springfield MRF,
11/17/22



Baled PP #5 plastic at Springfield MRF, 11/17/22



Baled aluminum cans,
foil pie plates and
trays at Springfield
MRF, July 2021



Baled steel cans and lids at Springfield MRF, 11/17/22



Recycle cartons:

**Milk cartons, juice cartons,
almond milk cartons, juice boxes, soup boxes**

- Dual stream: recycle with other containers from beverages and food, *not* with paper.
- Empty, rinse, replace cap
- High quality paper inside; made into tissue products
- www.recyclecartons.com



NO “Capri Sun” type pouches
NO ice cream cartons



Baled beverage cartons at Springfield MRF, 11/17/22



Textiles Waste Ban (enacted 11/1/22)

DO NOT PUT IN RECYCLING OR TRASH



**Take textiles to a
drop-off location.**



Place clean, dry textiles and shoes in a bag and bring to:

- Drop box at your town transfer station (19 in FC)
- Salvation Army stores, Goodwill stores
- Other drop boxes, such as Bay State Textiles

Mattress Waste Ban (enacted 11/1/22)

WHAT DO I DO WITH THIS?



**Mattresses are no longer
accepted for trash disposal.**



Recycling programs are in place!

- Some are regional
- Ask at your town's transfer station
- Call your town hall, Board of Health or DPW to find out what to do with mattresses in your town.
- Check "Beyond the Bin" from MassDEP:

<https://recyclesmartma.org/beyond-the-bin-search/>

Kids love composting!

Contact and Links

Amy Donovan

Program Director,

Franklin County Solid Waste District

amy@franklincountywastedistrict.org

franklincountywastedistrict.org – (413) 772-2438

www.facebook.com/FranklinCountySolidWasteDistrict



Questions and Discussion